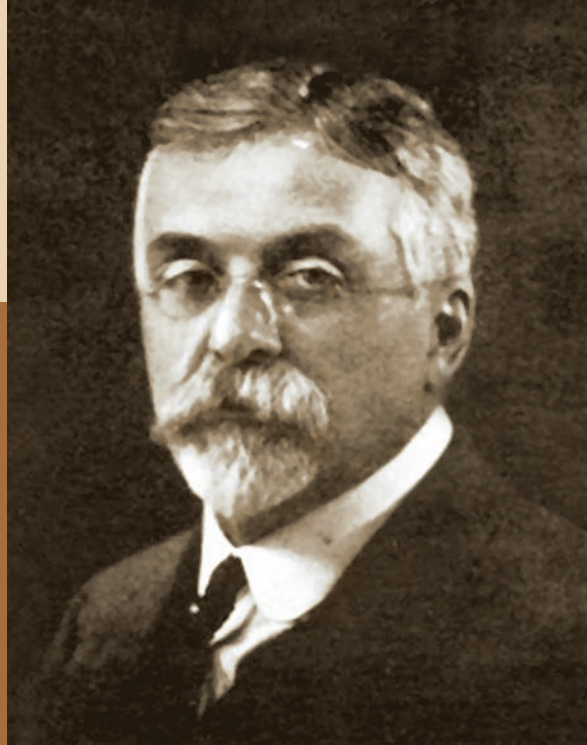


Rearranged & Augmented Edition

# **A Synoptic Key** of the **Materia Medica** **A Treatise for Homeopathic Students**



**C.M. BOGER, M.D.**

*Including A Brief Repertory*

**A SYNOPTIC KEY**  
*Of The*  
**MATERIA MEDICA**

*(A Treatise for Homeopathic Students)*

*includes*  
*A Brief Repertory*

**C.M. BOGER, M.D.**

**Rearranged & Augmented Edition**



**B. Jain Publishers (P) Ltd.**

An ISO 9001 : 2000 Certified Company

USA—EUROPE—INDIA

**A SYNOPTIC KEY OF THE MATERIA MEDICA**

Rearranged & Augmented Edition: 2007

Copyright © with the Publishers. All rights reserved

*Published by Kuldeep Jain  
for*

**B. Jain Publishers (P) Ltd.**

*An ISO 9001 : 2000 Certified Company*

USA — EUROPE — INDIA

1921, Street No. 10, Chuna Mandi,

Paharganj, New Delhi 110 055 (INDIA)

*Phones: 91-11-4567 1000*

*Fax: 91-11-4567 1010; Email: info@bjain.com*

*Website: [www.bjain.com](http://www.bjain.com)*

*Printed in India by*

**J.J. Offset Printers**

522, FIE, Patpar Ganj, Delhi - 110 092

*Phones: 91-11-2216 9633, 2215 6128*

**ISBN : 978-81-319-0007-9**

## **PUBLISHER'S NOTE TO REARRANGED & AUGMENTED EDITION**

- Correct prescribing is the art of carefully fitting pathogenetic to clinical symptoms, and as such at present requires a special aptness in grasping the essential points of symptom images, great drudgery in mastering a working knowledge of our large *Materia Medica* or a most skilful use of many *Books* of reference.
- It is the aim of this Rearranged & Augmented Edition to simplify and introduce method into this work, so that the truly homeopathic curative remedy may be worked out with greater ease and certainty. For this purpose a combination of the analytic and synoptic methods has been thought best.
- The Synopsis, is intended to make clear the *general expression or genius* of each remedy, and thereby help the prescriber correct his bearings. The scope of its contents is much enlarged by bracketing the most nearly affiliated remedies after some of the more important symptoms; this also helps in making differentiations.
- The Repertory is only intended to orient the searcher.
- The supplementary repertory at the back of the book has been incorporated with the repertory at the front and has been placed at the end of the book.
- Included is an index of remedies with the latest accepted abbreviations.

**Kuldeep Jain**

*CEO, B. Jain Publishers*

## FOREWORD

Correct prescribing is the art of carefully fitting pathogenetic to clinical symptoms, and as such at present requires a special aptness in grasping the essential points of symptom images, great drudgery in mastering a working knowledge of our large materia medica or a most skilful use of many books of reference.

It is the aim of this book to simplify and introduce method into this work, so that the truly homeopathic curative remedy may be worked out with greater ease and certainty. For this purpose a combination of the analytic and synoptic methods has been thought best.

The spirit of the clinical symptom picture is best obtained by *asking the patient to tell his own story*, whenever this is possible. This account is then amplified and more accurately defined by the questioner, who should first try to elicit the evident *cause and course* of the sickness, to which he will add all the things which *now seem to interfere* with the sufferer's comfort. Especially should the natural modifiers of sickness—*the modalities*—be very definitely ascertained. The following are the most vitally important of such influences: *Time, Temperature, Open Air, Posture, Being Alone, Motion, Sleep, Eating and Drinking, Touch, Pressure, Discharges, etc.*

A consideration of the *mental state* comes next in order of importance. Here the presence of *Irritability, Sadness* or *Fear* is the ruling factor.

The third step concerns the estimate to be put upon the patient's own description of his sensations. This is a very vital point and in order not to be misled it is always well to ascertain whether any of the following primary sensations are present: *Burning, Cramping, Cutting, Bursting, Soreness,*

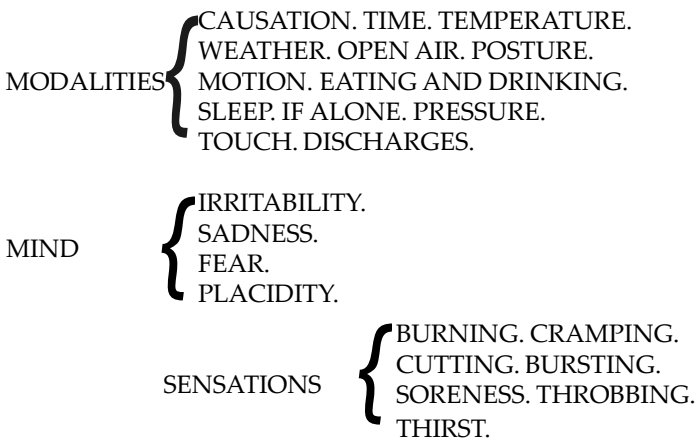
*Throbbing* and *Thirst*. There may be many others, but the presence of any one of these often overshadows them, especially such as may be due to the play of the imagination ; which feature is in itself of more importance than the particular thing imagined.

Next in order comes the *entire objective aspect or expression of the sickness* : This should especially include the *Facial Expression, Demeanor, Nervous Excitability, Sensibility, Restlessness or Torpor, State of the Secretions* and any abnormal coloring that may be present.

Lastly the *part affected* must be determined; this also brings the investigation in touch with diagnosis.

By going over the above rubrics in the order named the contour of the disease picture will be pretty clearly outlined and will point fairly well towards the simillimum, and the prescriber has only to keep in mind the fact that the actual *differentiating factor may belong to any rubric whatsoever* and also that the scope of these rubrics reaches far beyond the appended synoptic text.

For ready reference the following diagram has been arranged :



OBJECTIVE ASPECT { Demeanor.  
 RESTLESSNESS.  
 NERVOUS EXCITABILITY  
 FACIAL EXPRESSION.  
 TORPOR. SECRETIONS.  
 COLOR. ODOR.

PART AFFECTED { ORGANS.  
 RIGHT.  
 LEFT.

THE SYNOPSIS, is intended to make clear the *general expression or genius* of each remedy, and thereby help the prescriber correct his bearings. The scope of its contents is much enlarged by bracketing the most nearly affiliated remedies after some of the more important symptoms ; this also helps in making differentiations.

What often makes a cure hard is the laying of too much stress upon some particular factor at the expense of the disease picture as a whole, thus destroying its symmetry and forming a distorted conception of the natural image of the sickness. This does not, however, mean that all symptoms stand on the same level, for certain effects must be more prominent than others, yet be part and parcel of them. This is the sense in which we must learn to know our remedies, just as we do our friends, *by their air or personality* ; an ever changing, composite effect, but always reflecting the same motive.

Whenever the chosen remedy excites little or no reaction, the selection has either been faulty, or what is just as likely, one of the fundamental miasms which calls for either Psorinum, Sulfur, Medorrhinum or Syphilinum, is present.

Whenever the general benefit derived from a single dose lags, the remedy should be repeated in the next higher potency, instead of looking upon the new symptoms as

indicators for some other drug; for only the most inveterately rooted dyscrasia can, by varying its expression, resist the whole scale of an indicated remedy. Sometimes we can advantageously change to another potency scale of the same remedy, before attempting to scrutinize the remaining picture for those new developments which must point towards our next choice, nor should this successor be chosen until the new symptom picture — disease phase — takes on a fairly definite or settled form.

This new fifth edition of the Synoptic Key is herewith submitted to all brothers in the work. Only changes of proven value in co-ordinating and assembling the significant features of seemingly disassociated symptom groups, have been made. Upon these depends almost wholly the final choice of the simillimum. They should reflect a speaking image, as it were, of the correctly indicated remedy. To this end rubrics from my private files have been freely drawn upon. The symptom features of many remedies have been clarified in order to increase their usefulness, especially in precisionizing differentiations. The Repertory is only intended to orient the searcher.

The possibilities that inhere in the contact of the simillimum with the disordered vital force can not be foreknown. It therefore behooves every prescriber to use the utmost care in selecting the curative remedy. It will always remain true, as Paracelsus says in “Erste buch von blatern,” chap. 8, 1528. “Just so, Mercury, (etc.), — cures — things Mercuric” only.

The strain which runs through every pathogenetic symptom complex has been called the “genius” of the drug. To give this its proper place in the prescription should be the ideal of every prescriber. To this end is this book written.

**C. M. BOGER**

Parkersburg, W. Va.



# CONTENTS

## PART - I

### MATERIA MEDICA

Abrotanum .....	3	Arsenicum album .....	30
Aconitum napellus .....	4	Arsenicum iodatum .....	33
Actaea spicata .....	6	Arum triphyllum .....	34
Adonis .....	6	Asafoetida .....	34
Aesculus hippocastanum .....	7	Asarum .....	35
Aethusa cynapium .....	8	Asclepias tuberosa .....	36
Agaricus muscarius .....	9	Asterias rubens .....	37
Agnus castus .....	10	Aurum .....	37
Ailanthus .....	11	Badiaga .....	38
Aletris farinosa .....	11	Baptisia .....	39
Allium cepa .....	12	Baryta carbonica .....	40
Aloe socotrina .....	13	Belladonna .....	41
Alumina .....	14	Bellis perennis .....	43
Ambra grisea .....	15	Benzoicum acidum .....	43
Ammonium carbonicum .....	16	Berberis vulgaris .....	44
Ammonium muriaticum .....	17	Bismuthum .....	45
Amylenum nitrosum .....	18	Borax .....	46
Anacardium orientale .....	19	Bovista .....	47
Anthracinum .....	20	Bromium .....	48
Antimonium crudum .....	20	Bryonia alba .....	49
Antimonium tartaricum .....	21	Bufo rana .....	51
Apis mellifica .....	23	Cactus grandiflora .....	52
Apocynum .....	25	Cadmium sulphuratum .....	52
Aralia racemosa .....	25	Caladium .....	53
Aranea diadema .....	26	Calcarea fluorica .....	54
Argentum metallicum .....	26	Calcarea hypophosphorica .....	54
Argentum nitricum .....	27	Calcarea carbonica ostrearum ..	55
Arnica montana .....	29	Calcarea phosphorica .....	57

Calcarea sulphurica .....	58	Coccus cacti .....	88
Calendula officinalis .....	59	Coffea cruda .....	89
Camphora officinalis .....	59	Colchicum autumnale .....	90
Cancer fluviatilis (Astacus fluviatilis) .....	60	Collinsonia .....	91
Cannabis indica .....	61	Colocynthis .....	92
Cantharis vesicatoria .....	62	Comocladia .....	93
Capsicum annum .....	63	Conium maculatum .....	93
Carbo animalis .....	64	Copaiva officinalis .....	95
Carbo vegetabilis .....	65	Corallium rubrum .....	95
Carbolicum acidum .....	67	Cornus circinata .....	96
Carduus marianus .....	67	Crataegus oxyacanta .....	96
Castoreum .....	68	Crocus sativus .....	97
Caulophyllum .....	69	Crotalus horridus .....	97
Causticum .....	69	Croton tiglium .....	98
Ceanothus .....	71	Cubeba officinalis .....	99
Cedron .....	71	Culex musca .....	99
Chamomilla .....	72	Cuprum metallicum .....	100
Chelidonium majus .....	73	Cuprum arsenicosum .....	101
Chenopodium .....	74	Cyclamen europaeum .....	102
Chimaphilla .....	75	Daphne indica .....	103
China officinalis .....	75	Dictamnus .....	103
Chininum arsenicosum .....	76	Digitalis purpurea .....	104
Chininum sulphuratum .....	77	Dioscorea villosa .....	105
Chionanthus .....	77	Diphtherinum .....	106
Chloralum hydratum .....	78	Drosera rotundifolia .....	106
Chlorum .....	78	Dulcamara .....	107
Cicuta virosa .....	79	Echinacea angustifolia .....	108
Cimicifuga .....	80	Elaps corallinus .....	109
Cina .....	82	Epiphegus virginiana .....	110
Cinnabaris .....	83	Equisetum hyemale .....	110
Cistus canadensis .....	83	Erigeron canadense .....	110
Clematis erecta .....	84	Eucalyptus .....	111
Cobaltum .....	85	Euonymus .....	111
Coca .....	86	Eupatorium perfoliatum .....	112
Cocculus indicus .....	86	Eupatorium purpurium .....	113
		Euphorbium .....	113

Euphrasia officinalis .....	114	Kalium carbonicum .....	146
Fagopyrum .....	114	Kalium chloricum .....	148
Ferrum metallicum .....	115	Kalium iodatum .....	149
Ferrum phosphoricum .....	116	Kalium muriaticum .....	150
Fluoricum acidum .....	117	Kalium nitricum .....	151
Formica rufa .....	118	Kalium phosphoricum .....	152
Fraxinus .....	119	Kalium sulphuricum .....	153
Gambogia .....	119	Kalmia latifolia .....	154
Gelsemium .....	119	Kreosotum .....	155
Glonoinum .....	121	Lac caninum .....	156
Gnaphalium .....	123	Lac defloratum .....	157
Gossypium .....	123	Lachesis mutus .....	157
Graphites .....	124	Lappa arctium .....	160
Gratiola officinalis .....	126	Latrodectus .....	160
Grindelia robusta .....	126	Laurocerasus .....	161
Guajacum officinale .....	127	Ledum palustre .....	162
Gymnocladus .....	128	Leptandra .....	163
Hamamelis .....	128	Lilium tigrinum .....	163
Helleborus niger .....	129	Lithium carbonicum .....	165
Helonias dioica .....	130	Lobelia inflata .....	165
Hepar sulphuris .....	131	Lycopodium .....	166
Hydrastis canadensis .....	132	Lycopus virginicus .....	168
Hydrocyanicum acidum .....	133	Lyssinum .....	169
Hyoscyamus niger .....	134	Magnesium carbonicum .....	169
Hypericum perforatum .....	135	Magnesium muriaticum .....	170
Ignatia amara .....	136	Magnesium phosphoricum .....	171
Iodium .....	138	Magnesium sulphuricum .....	172
Ipecacuanha .....	139	Mancinella .....	173
Iris versicolor .....	141	Manganum .....	173
Jaborandi .....	141	Medorrhinum .....	174
Jalapa .....	142	Melilotus alba .....	176
Jatropha .....	142	Menyanthes .....	177
Justicia adhatoda .....	143	Mephitis .....	177
Kalium arsenicosum .....	143	Mercurius .....	178
Kalium bichromicum .....	144	Mercurius corrosivus .....	180
Kalium bromatum .....	145	Mercurius cyanatus .....	181

Mercurius dulcis .....	182	Physostigma .....	215
Mercurius iodatus flavus .....	182	Phytolacca decandra .....	216
Mercurius iodatus ruber .....	183	Picricum acidum .....	217
Mercurius praecipitatus ruber .....	184	Plantago major .....	218
Mezereum .....	184	Platinum metallicum .....	218
Millefolium .....	185	Plumbum metallicum .....	219
Moschus .....	186	Podophyllum peltatum .....	221
Murex .....	186	Polygonum sagittatum .....	222
Muriaticum acidum .....	187	Prunus spinosa .....	222
Mygale lasiodora .....	188	Psorinum .....	223
Myrica cerifera .....	188	Pulsatilla .....	224
Naja tripudians .....	189	Pyrogenium .....	227
Natrium carbonicum .....	190	Radium bromatum .....	228
Natrium muriaticum .....	191	Ranunculus bulbosus .....	229
Natrium phosphoricum .....	193	Ranunculus scleratus .....	230
Natrium sulphuricum .....	194	Raphanus sativus .....	230
Nitricum acidum .....	195	Ratanhia .....	230
Nux moschata .....	197	Rheum .....	231
Nux vomica .....	199	Rhododendron .....	232
Ocimum canum .....	201	Rhus toxicodendron .....	233
Oenanthe crocata .....	201	Robinia .....	235
Oleander .....	202	Rumex crispus .....	235
Oleum animale .....	202	Ruta .....	236
Oleum jecoris .....	203	Sabadilla .....	237
Onosmodium .....	204	Sabal serrulata .....	238
Opium .....	205	Sabina .....	239
Osmium .....	206	Sambucus nigra .....	240
Oxalicum acidum .....	206	Sanguinaria canadensis .....	240
Paonia officinalis .....	207	Sanicula aqua .....	242
Palladium .....	207	Sarsaparilla .....	242
Pareira brava .....	208	Scoparius genista .....	243
Paris quadrifolia .....	208	Scutellaria laterifolia .....	244
Petroleum .....	209	Secale cornutum .....	244
Phellandrium .....	210	Selenium .....	245
Phosphoricum acidum .....	210	Senecio aureus .....	246
Phosphorus .....	212	Senega .....	247

Sepia .....	248
Silicea terra .....	250
Solidago .....	252
Spigelia anthelmia .....	252
Spongia tosta.....	253
Squilla maritima.....	254
Stannum metallicum .....	255
Staphysagria .....	256
Sticta pulmonaria .....	257
Stramonium .....	258
Strontium carbonicum .....	259
Strophanthus .....	260
Sulphur.....	260
Sulphuricum acidum .....	263
Sulphur iodatum.....	264
Sumbul .....	264
Symphytum officinale.....	265
Syphilinum .....	265
Tabacum.....	267
Taraxacum .....	268
Tarentula hispanica .....	268
Tarentula cubensis .....	270
Tellurium metallicum .....	270
Terebinthinae oleum .....	271
Teucrium marum verum .....	272
Theridion .....	272
Thlaspi bursa pastoris .....	273
Thuja occidentalis .....	274
Thyreoidinum .....	276
Tilia europaea .....	276
Trillium pendulum .....	277
Tuberculinum .....	277
Urtica urens.....	278
Ustilago maydis .....	279
Valeriana officinalis .....	280
Variolinum .....	281

Veratrum album .....	281
Veratrum viride .....	283
Verbascum thapsus.....	284
Viburnum opulus .....	284
Vinca minor .....	285
Viola odorata .....	285
Viola tricolor.....	286
Vipera berus .....	286
Viscum album .....	286
Xanthoxylum .....	287
Zincum metallicum .....	287
Zincum arsenicosum .....	289
Zincum chromicum .....	289
Zincum phosphoricum .....	290
Zincum iodatum .....	290
Zincum valerianicum .....	290

## **PART - II**

### **REPERTORY**

Anus and rectum .....	439
Appetite .....	423
Aversions .....	424
Axillae .....	476
Back, spine and cord.....	484
Chest and lungs .....	472
Chill, chilliness, coldness, etc.	512
Concomitants . 447, 451, 461, 465	
Conditions of aggravation and amelioration .....	296
Cough.....	465
Cravings and desires .....	425
Dorsal region .....	488
Ears .....	397
Epigastrium .....	430
Eructations .....	429

External abdomen .....	435	Regurgitation .....	427
External chest .....	476	Respiration .....	461
External head; bones & scalp .....	388	Sacrum .....	489
External throat .....	471	Saliva .....	421
Eyes .....	389	Scapular region .....	487
Face .....	404	Sediment .....	450
Female organs .....	455	Sexual impulse .....	458
Flatulence .....	438	Skin .....	501
Generalities .....	316	Sleep .....	509
Genitals .....	453	Stomach and abdomen .....	430
Groins .....	439	Stool .....	441
Gums .....	411	Sweat .....	515
Head .....	379	Taste .....	422
Hearing .....	398	Teeth .....	409
Heart, circulation and pulse ...	478	Thirst .....	424
Heartburn .....	426	Time .....	293
Heat .....	513	Tongue .....	412
Hiccough .....	426	Upper limbs .....	489
Hypochondria .....	436	Urinary organs .....	451
Intellect .....	367	Urine .....	448
Larynx and trachea .....	469	Vertigo .....	378
Leucorrhœa .....	461	Vision .....	394
Lower limbs .....	494	Voice and speech .....	470
Lumbar region .....	488	Vomiting .....	427
Male organs .....	453	Waterbrash .....	426
Mammae .....	477		
Menstruation .....	459		
Micturition .....	447		
Mind .....	367		
Mouth and throat .....	415		
Nausea .....	426		
Neck (nape) .....	471		
Nipples .....	478		
Nose and accessory cavities ..	399		
Palate .....	412		
Perineum .....	441		
Qualmishness .....	426		

## **PART - III**

### **MISCELLANEOUS**

Table of the Approximate Minimum Duration of Action of Remedies by Weeks .....	515
Complementary Remedies .....	519
Antagonistic Remedies .....	522
List of Remedies and Their Abbreviations .....	523

## COPAIVA OFFICINALIS

### SPHERE OF ACTION

MUCOUS GLANDS

- **Genito-urinary.**
- Bronchial.

Rectum.

Skin.

### AGGRAVATION

Morning.

Taking cold.

FOUL BLENORRHEA: **bronchorrhea**, suppuration, etc.  
 ..... Stools of masses of or covered with mucus. Pulsation in  
 penis. Urethra feels wide open. Acrid, scanty, bloody urine; odor of  
 violets. Dysuria. Catarrh of bladder. Purulent or acrid, milky  
 gonorrhoea. Suppuration ascends urinary tract. Painful cough, with  
**heat**, oppression of chest and foul, bloody expectoration. Burning in  
 lungs. Rushes of blood to head and face. Urticaria.

**Complementary:** Sep.

**Related to:** Ter.

## CORALLIUM RUBRUM

### SPHERE OF ACTION

RESPIRATORY ORGANS.

NERVES.

MUCOUS MEMBRANES.

### AGGRAVATION

AIR

- Change of.

- **Inhaling.**

**Eating.**

Towards morning.

**Almost continuous paroxysms of extremely violent, spasmodic cough**, which begin with **gasping for breath**, are accompanied by a purple face, and **followed by exhaustion**, and vomiting of stringy mucus. A reverberating, minute gun cough. Cough as soon as he eats. Whooping cough. Sleeps with head under covers. Very red (flat) venereal ulcer. Too hot if covered, but chilled by uncovering.

**Complementary:** Sulph.

**Related to:** Coc-c.

## CORNUS CIRCINATA

### SPHERE OF ACTION

**Blood.**

**Liver.**

Spleen.

Digestive tract.

### AGGRAVATION

Night.

Taking cold.

Weak and depressed. **Liver symptoms, with aching eyeballs.** Dark, foul stools, with burning at anus. Diarrhea. Sallow skin. Sleepy before the chills, with the heat and after meals. Old malarials.

**Related to:** Eup-per.

## CRATAEGUS OXYACANTA

### SPHERE OF ACTION

HEART

Nerves

Weak and exhausted; suddenly. Cardio-hemorrhagic or lithemic cases (Lycps-v.). ..... Irritable. Despairing. Cough, with albuminous expectoration. **WEAK HEART MUSCLES** (right); with oppression, stitches or **insomnia**. Cardiac dyspnea. Myocarditis. Incompetent valves. Cardiac dilatation. Angina pectoris. Pain under left scapula. Dropsies. Pulse rapid, irregular and small. Burning, smarting eruption in back of neck; axillae and chin; < heat and sweating; > washing. Sweaty palms.

**Related to:** Apoc., Stroph-h.



## CROCUS SATIVUS

### SPHERE OF ACTION

MIND.

NERVES.

Eyes.

Circulation.

**Female organs.**

### AGGRAVATION

**Motion.**

Puberty.

Pregnancy.

Reading.

Heat.

### AMELIORATION

Open air.

**Rapidly changing or alternating symptoms;** of opposite moods; of sides; of mind and body, etc. Single muscles twitch; upper eyelids, etc. Faint, drowsy and hysterical. Chorea. **Jumping about, as of something alive internally.** HEMORRHAGE, **dark, stringy, tough.** ..... **Impressionable, affectionate and moody.** Involuntary laughter and weeping; < music. Hysteria. Climacteric hemicrania; instead of menses; > pressure. Dry, burning eyes, as after weeping, or as if in a cool wind. Winks or must close eyes tightly. Lachrymation when reading. Nosebleed, with faintness and cold sweat on forehead; of young girls. Sexual excitement. **Dark, foul, stringy menses.** Threatened abortion. Narcotic sleep. Singing during sleep.

**Related to:** Ign., Tarent.

## CROTALUS HORRIDUS

### SPHERE OF ACTION

BLOOD.

**Heart.**

Cerebro-spinal nerves.

**Liver.**

**Throat.**

Occiput.

**Right side.**

### AGGRAVATION

**Lying on right side.**

**Falling to sleep.**

Warm weather.

**Spring.**

Alcohol.

### AMELIORATION

Light.

Motion.

Deathly sick, tremulous and weak. HEMORRHAGE; slow; oozing of dark, thin blood; **pharyngeal**. Bloody pus or sweat. **Putridity**, rapid decomposition and **MALIGNANCY**. **Septic**; tonsils, goitre, ulcers, abscess, etc. Dark or **bluish parts**. Petechie. Gangrene. General burning. ....Plaintive speech. Timid; fears evil. Torpid. Forgetful. Mistakes in writing. Delirium. Faintings. **Occipital ache**; in waves from spine. Distorted face on waking. Epilepsy. Dark, besotted face. Grinds teeth. Mouldy breath. Swelled tongue. Stiff palate. Craves pork. Craves stimulants. Bilious vomit. Perineal abscess. Mouldy excretions. Anxious, labored breathing. **HEART**, weak, trembles, feels loose or turns over; sensitive to lying on left side. First one limb then the other is numb. Jaundice. **Blood-boils**. **Horrible dreams**; of the dead. Black-water fever. High fever; with scarlet skin. Edema about affected parts.

**Complementary:** Lycps-v.

**Related to:** Lach., Sul-ac.

## CROTON TIGLIUM

### SPHERE OF ACTION

MUCOUS MEMBRANES

- Bowels.
- Eyes.

Bladder.

Mammae.

Uterus.

Skin

- **SCROTUM.**
- **FACE.**

### AGGRAVATION

DRINKING.

Eating.

Washing.

Motion.

Receding eruptions.

**Drawn backward feeling**; in eyes; nipples, etc. ....  
Neuralgia of tongue. Pressure excites rectal pain or a stool. **Gargling or swashing as of water in bowels**; THEN SUDDEN, PROFUSE,

GUSHING STOOL OF YELLOW WATER, < DRINKING; then prostration. Diarrhea. Cholera infantum. **Can't inhale deeply enough.** Pain from nipple to back, as child nurses. Nodes in mammae. Neck and shoulders pain. Violently itching, tense burning, red skin; sore if scratched, > gentle rubbing. **Eruptions**; clustered; of blisters which burst and form crusts; **vesiculo-pustular** (Sep.), < genitals, temples and crown of head. Eczema. Zoster.

**Related to:** Rhus-t.

## CUBEBA OFFICINALIS

### SPHERE OF ACTION

**Mucous membranes**

- URETHRA.
- Bladder.
- **Vagina.**

### AGGRAVATION

**Night in bed.**

### AMELIORATION

Walking about.

**Burning** rawness. Violent inflammation, then acrid, yellow or green, offensive discharges. Catarrhs.....Veins of forehead distended. Gelatinous, cold stools; with grains like rice. Cramp or cutting-burning after urinating. Stringy gonorrhoea.

**Related to:** Cist., Cop.

## CULEX MUSCA

Edema. Vertigo; on blowing nose. Menses stain indelibly (Thlas.). Gripping down over hips, then into womb. As of cold air blowing through a hole in clothes on chest or back.

## CUPRUM METALLICUM

### SPHERE OF ACTION

NERVES

- **Cerebro-spinal.**

- **Axis.**

Digestive tract.

**Epigastrium.**

Abdomen.

**Muscles.**

Blood

### AGGRAVATION

Emotions: Anger

**Suppressions.**

Overtax.

Motion.

**Hot weather.**

Vomiting.

Loss of sleep.

**Touch.**

Raising arm.

### AMELIORATION

**Cold drinks.**

Pressure over heart.

Sub-oxidation, affecting the centers of the medulla. **Violent effects**; in recurring symptom groups. CRAMPS AND SPASMS; of all kinds; radiating from or of single parts; **extort cries**; tonic, **knotting the muscles**; twisting the head awry; with **trismus** or hiccough; then deathly exhaustion, chills, spasmodic laughter, etc.; in chest; behind sternum; of fingers, **calves** > stretching leg out, or soles, etc.; **nocturnal**; < at menses; epileptic. **Jerkings**; during sleep. Pains; **pressive**, < **touch**; as from blows, being broken, etc.; in racking darts, through whole body. Continued weakness. Poor reaction. **Easy relapses**. Latency. **Blueness**. ..... **Hypersensitive**: every drug overacts, without curing. **Uneasy**. Nervous. Sense of losing consciousness. Impulsive. **Piercing shrieks**. Delirium; loquacious; then cold sweat. Confusion. Melancholy; with spells of fear of death. Sullen; tricky; alternately yielding and headstrong. **Vertigo**; with internal tremor, > stool. Can't hold head erect or bores it into pillow. Crawling on vertex. Pulls her hair. Meningitis. Eyeballs oscillate behind **closed lids**. **Face livid**, pale or distorted. Closed mouth. Grinds

teeth. **Metallic taste.** Puts tongue out like a snake. Loss of speech. Noisy swallowing. Nausea. Vomiting; violent; tormenting; > drinking; with **agonizing colic**, diarrhea and shrieks or convulsions. Painful transfixion cramp. Hard pressure in epigastrium. Lies on stomach and jerks buttocks up. Tense abdomen. **Frightful colic**, > pressure, < raising arms. Spurting stools; of green water. Cholera. Suppressed urine. Cramps prevent coition. After-pains. Spasm of glottis. Dyspnea; can't bear anything near mouth; < coughing or laughing. Asthma. Cough; in violent paroxysms; coughs herself out of breath; > **cold drinks** (Caust.), < deep breathing or bending back; with cramps, spasms (Zinc.) or lachrymation. Whooping cough. **Chest; loud rattle in**; painful, constriction of (lower). Jerking hands and feet. Clenches thumbs into palms. Heavy ankles. Repressed or undeveloped eruptions, discharges, etc. (Zinc.) Yellow, scaly eruptions. Slow pulse. Icy cold; afebrile. Chilly. Cold, clammy sweat; at night. Collapse.

**Complementary:** Calc.

**Related to:** Verat.

## CUPRUM ARSENICOSUM

### SPHERE OF ACTION

DIGESTIVE TRACT.

Muscles.

Nerves.

### AGGRAVATION

Touch.

**Pressure.**

Dampness.

**Violent cramps and colics**; inflammatory; in chest, fingers, calves, toes, etc.; with obstinate hiccough or icy cold body. Convulsions. Chorea. Sharp, shooting abdominal pains. Visceral neuralgia. Intestinal catarrh. Cholera infantum. Vomiting and diarrhea; with **uremia**. Rice water stools. Weak heart. Cold, clammy, intermittent sweat. Leg cramps, > pressing foot on floor (Stry-p.). Numb, paralysed feeling in legs.

**Related to:** Cupr.

## CYCLAMEN EUROPAEUM

### SPHERE OF ACTION

**Cerebro-spinal axis.**

**Vision.**

Blood.

Digestive tract.

FEMALE SEX ORGANS.

### AGGRAVATION

Cold.

Evening.

Fresh air.

Sitting.

Fats.

### AMELIORATION

Motion.

During menses.

Weeping.

VISUAL EFFECTS or **vertigo**, from menstrual or gastric disorders. Dreads open air. Chlorosis. .... Dull, sad, sleepy and morose. Self-reproaches. Silent weeping. The room seems too small (Berb., Nat-c.). Brain feels wrapped up. **Pain in left temple.** Prolonged migraine. Convergent squint. Blurred vision (Nat-m.). **Fluttering, glittering or black vision.** Sees stars. Sneezing, with itching in ear. Anosmia. Lost or salty taste. **Hiccough;** < pregnancy; with yawning. Hiccoughy eructation. Nausea in throat. Craves lemonade. Quick satiety. Loathing and nausea from the least food. Hyperemesis. Diarrhea, < coffee. **Menses;** excessive, early, dark or changeable; clotted; membranous; less if in motion. Dysmenorrhoea. Coughs, without waking. Air seems to stream from nipples. Swelled breasts; < after menses. Milk in virgin breasts. Weakness; < in knees. Burning, sore heels. Pains in thinly covered bones. Chilly all over. Chilly, not > covers. Offensive sweat.

**Related to:** Puls.

## DAPHNE INDICA

### SPHERE OF ACTION

Muscles.

Bones.

Left side.

### AGGRAVATION

Cold air.

Waning moon.

Evening in bed.

Parts—head, arms, etc.—seem separated from body (Bapt., Psor.). Bruised pain. **Fetor**. Exhaustion..... Sad. Head feels big. **Tongue, coated on one side only** (Irid-m., Rhus-t.). Sleepless; from **bone aches**. Clammy sweat.

**Related to:** Rhus-t.

## DICTAMNUS

### SPHERE OF ACTION

Female organs.

Nerves.

Sleep.

### AGGRAVATION

Standing.

Increased secretions. .... A lump rises in throat. Bearing down, with bilious vomiting, < standing on feet. **Menses early**; of black clots; preceded by blindness. Sensation of milk flowing into mammae. Cramps from anterior thighs into uterus, before menses. **Somnambulism** (Phos.). Dreams of piercing bodies of her children together (Phos.).

**Related to:** Puls.

## DIGITALIS PURPUREA

### SPHERE OF ACTION

#### Vagus.

HEART; Muscle.

#### CIRCULATION

- Liver.
  - Lungs.
  - Stomach.
- Occiput.  
Genito-urinary organs.

### AGGRAVATION

#### Raising up.

#### Exertion.

Heat.

#### Lying on left side.

Motion.

Smell of food.

Cold drinks.

Excesses: Sexual.

### AMELIORATION

Rest.

Cool air.

Lying flat on back.

WEAKNESS, **faint-like**; can hardly talk. **Heart slow**, with indefinite or causeless symptoms. **HEART SLOW**, **weak or irregular**; quick, on motion,; with liver or sexual symptoms; at puberty. **Must walk about**, with precordial anxiety; with teasing to urinate..... Anxious solicitude. Dizzy. **Crashes in head**; on dropping to sleep. Spastic hemicrania. Yellow-red conjunctiva. Seething in ears. **Face pale**; **bluish**, also lips and tongue. Thick, flabby tongue. Much thirst, little appetite (Sulph.), but no fever. **Deathly nausea or with faint sinking at pit of stomach**. Liver sore, swelled. White, putty-like stools. Dribbling urination. Dropsy. Throbbing in neck of bladder. Early morning erection. Swelled prostate; senile. **Atonic night losses**. Glans inflamed; gonorrhoea of (Jac-c.). Profuse, thick, yellow-white gonorrhoea. Slow breathing. Cough, with pains in shoulders and arms. **HEART**; **weak**; **feels like stopping**; sprains; palpitation. Slow, intermittent pulse. Numb or weak left arm. **Drowsy**. Dreams of falling; wakes with a shock. Cold skin. Flushes of heat, then great weakness. Cold, clammy sweat.

**Related to:** Glon., Spig.



## DIOSCOREA VILLOSA

### SPHERE OF ACTION

#### NERVES

- Spinal cord.
- **Abdominal.**
- Sciatic.

#### Nevel.

#### Gall-bladder.

Right side.

### AGGRAVATION

**Doubling up.**

**Lying.**

**Tea; Eating.**

### AMELIORATION

**Stretching out** or bending back.

Motion; in open air (Mag-c.,  
Puls.).

Hard pressure.

A remedy of **pains**, of all kinds. UNBEARABLY SHARP, CUTTING, TWISTING, GRIPING OR GRINDING PAINS; **that dart about or radiate**; to distant parts, arms, etc.; **in paroxysms**; cease suddenly, then start in different place; periodical. **Shudderings**, from pain, etc. .... Nervous and easily troubled. Confused, full head. Sensation as if head were crushed down (Dios.). Eructations; with hiccough. Cardialgia. Pains shoot from liver to right nipple. Violent **abdominal colic**, > motion; pains go into back, chest or arms. Flatulence. Darting, from anus to liver. Piles like a bunch of cherries. Weakening morning diarrhea, without relief. Erections lasting all night. Cold, relaxed sexual organs. Atonic emissions, then weakness; < knees. Violent dysmenorrhea. Chest or cardiac pains radiate into both arms. Felon. Burning, numb, sciatic (right) pain, < motion. Hamstrings seem too short. Cold, clammy sweat; of strong odor on genitals.

**Related to:** Coloc., Mag-c.

## DIPHThERINUM

### SPHERE OF ACTION

**Blood.**  
 Throat.

### AGGRAVATION

Lying.  
 Cold.  
 Milk.

**Weak and restless, but without pain**, or aching, breaking joint pains, > lying. Wants to be held. Drawing in muscles, then sudden snap. Jerking of single parts. Internal trembling. ....Sees visions. Carphology. Moisture at edge of hair. Fanning of alae nasi, with snoring. Yellow, thick nasal discharge. Flushed face; center of cheeks purple. Moist tongue, with red tip or a dark red spot back of tip; red papillae. Throat dark. **Thick, gray membrane**; on tonsil (left). Feter. Wants cold air down throat or craves cold drinks. **Diphtheria**; prophylactic; **painless**; relapsing. Post-diphtheric paralysis. Obstinate tonsilitis. Faintness at stomach, > sips of milk. Dry, hot palms; they feel withered. Dry skin. Talks in sleep, with open eyes. Low temperature. Chilly, then hot.

**Related to:** Carb-ac.

## DROSErA ROTUNDIFOLIA

### SPHERE OF ACTION

RESPIRATORY ORGANS.  
**Bones**  
 - Long (Still).  
 - Joints.  
**Larynx.**  
**Chest.**  
 Lungs.  
 Glands.

### AGGRAVATION

**After midnight.**  
**On lying down.**  
 Warmth.  
**Talking.**  
 Cold foods.  
 Laughing.  
 After measles.

### AMELIORATION

Pressure.

**Spasmodic**, catarrhal and hemorrhagic effects. **Tuberculosis**; of bones.....Easily angered. Desire to drown himself. Sensitive to sour odors. Painful sneezing. Putrid taste. **PROLONGED, PERIODICAL FITS OF RAPID, INCESSANT, DEEP BARKING OR CHOKING COUGH; as if from abdomen; taking away the breath; compel holding the sides and ending in retching, vomiting (first of ingesta, then of mucus), nosebleed or cold sweat;** followed by loquacity. Typical whooping cough. Tickling like a feather or crumb in larynx. Bloody, purulent expectoration. **Hoarse, toneless voice. Constriction of chest.** Stitches below axillae. Writers' cramp.

**Complementary:** Sulph.

**Related to:** Coc-c., Cor-r.

## DULCAMARA

### SPHERE OF ACTION

MUCOUS MEMBRANE

- Bronchi.
- Bladder.
- Eyes.

BACK.

- **Muscles.**
- LOINS.

SKIN.

**Umbilicus.**

Lymphatics.

### AGGRAVATION

BEING CHILLED

- WHILE HOT.
- **Sudden change of temperature.**

- **Uncovering**

- COLD WET; Feet, ground, cellars, beds, etc.

**Suppressed discharges, sweat, eruptions, etc.**

**Autumn.**

Night.

Rest.

Injuries.

Mercury.

Before storms.

**Excessive secretion of mucus.** Catarrhal—rheumatic—herpetic tendency. Stiff, numb, achy and sore from every exposure to damp cold. Tearing. **Paralytic effects.** Gripping in bowels, testes, etc..... **Confusion. Depression. Scolding.** Difficult speech. Easily becomes delirious. Occiput feels large. Ringworm of scalp. Aching in nose. Coryza; stuffed; **summer colds**, with diarrhea. Nose obstructed by the least fresh air. Nosebleed; replaces menses. Thick, brown-yellow crusts on face. Swelled tongue. Tenacious, soapy saliva. Cutting at navel; then painful, green, **slimy stools**. Sour, watery stools, < night. **Every cold settles in eyes, throat or affects bladder** (Puls.), bowels or respiration (Sulph.). Frequent urination. **Cloudy, slimy or foul urine.** Cystitis. Dropsy. Enlarged testes, with gripping pains. Watery menses. Cough : caused by tickling in back of throat; in prolonged fits; with much loose, easy expectoration. **Eruptions;** scaly, thick, crusty, moist, bleeding or herpetic; < before menses. **Urticaria.** Pruritus. Large, smooth, fleshy, flat warts. **Coldness;** in occiput; lumbar region; in bowels; **icy, of paralyzed part.** Chilliness starts from back; not > warmth; < evening. Chill with urging to stool and urinate. Foul sweat.

**Complementary:** Bar-c., Nat-s.

**Related to:** Rhus-t.

## **ECHINACEA ANGUSTIFOLIA**

### **SPHERE OF ACTION**

**Blood.**  
Circulation.  
Gums.  
Lymphatics.  
Left side.

### **AGGRAVATION**

Eating.  
Injury.  
Operations.

### **AMELIORATION**

Rest.

**Weak, tired and achy.** Slow speech, gait, replies, etc. **Weakness,** in stomach; in bowels; **of heart;** in knees; with vertigo. Sepsis.

Lymphangitis. Rheumatism. .... Depressed or cross and out of sorts. Can't exert mind. Sharp pain deep in brain, it seems too large. Throbbing through temples. Hot, burning forehead. Twitching brows. Bluish face. Teeth sensitive to drafts of air. Mucus, frothy in mouth; hawks from throat. Tongue numb. Peppery taste. Aphthae. **Nauseated and chilly.** Sour, bloody vomitus; like coffee grounds. As of a load in posterior liver. Blood follows stool. Seminal emissions. As of a lump under sternum. Burning under left scapula. Hands, numb alternately or restless; on awaking. Dreams of difficulties; laborious or quarrelsome. **Irregular chills, heats and sweats.** Chill in left occiput. Sweat on upper parts; on forehead. Increasing, but variable pulse.

**Related to:** Arn., Pyrog., Rhus-t.

## ELAPS CORALLINUS

### SPHERE OF ACTION

**Blood.**  
Nose.  
Ears.  
Throat.  
Right side.

### AGGRAVATION

**Approach of storms.**  
Cold; Drink or food.  
Dampness.  
Night.  
In room.

**Black discharges;** hemorrhages, etc. Internal **coldness;** in chest; < drinking. Adynamic sepsis. Oscillatory motions. Twisting spasm, then paralysis; esophageal. Right side feels paralyzed, weak or insensible. Wrinkled mucous membranes (Ars.). .....Fear causes chattering teeth and trembling. Fears rain. Black rings before left eye. Deafness; at night. Stuffed feeling in naso-pharynx. Green-yellow crusts in nose. Ozena. Nosebleed. Red spots on face. Drinks feel like ice in stomach. Stools of black, frothy blood. Air hunger. Painful cough. Pain at apex of right lung. Weak arms. Peeling palms and fingertips. Rushes of blood to head. Icy cold feet. General cold sweat.

**Antidotes:** Cedr.

**Related to:** Crot-h., Helo.

## EPIPHEGUS VIRGINIANA

### SPHERE OF ACTION

Nerves.  
Stomach.  
Liver.

### AGGRAVATION

Fatigue; Nervous; of Shopping.  
Eyestrain.

### AMELIORATION

Sleep.

Confusion. Like fingertips pressing into temples. Compressive (right) headache, going backward; < until 4 P. M. then >; **with spitting of viscid saliva** and nausea. Weekly headaches. Neurasthenia. Tartar on teeth.

**Related to:** Ign., Iris.

## EQUISETUM HYEMALE

### SPHERE OF ACTION

GENITO-URINARY TRACT.

### AGGRAVATION

**At close of urination.**  
Pressure.

Aching, full, tender bladder. Cystitis. Prickling, burning, or cutting in urethra. Dysuria. NOCTURNAL ENURESIS; with irritable bladder. Dribbling urine. **Mucus in urine.**

**Complementary:** Sil.

**Related to:** Canth.

## ERIGERON CANADENSE

### SPHERE OF ACTION

Genito-urinary tract.  
Joints.

### AGGRAVATION

Rainy weather.